

# LAX is On The Move

## GET READY – AIRLINES AT LAX ARE MOVING TO NEW LOCATIONS

Twenty-one airlines are being relocated at LAX in what airport officials are calling one of the largest terminal moves in the history of commercial aviation. The changes are a result of the Delta Air Lines move from Terminals 5 and 6 to Terminals 2 and 3 at Los Angeles International Airport. Delta's relocation to the north side of the U-shaped airport is part of the huge modernization effort at the nation's second busiest airport.

The move affects nearly one-third of the airlines that operate out of LAX, with many moving to new terminals and others to new ticket counters within their current terminal. The airlines plan to complete their relocations overnight, opening the next morning in their new spots, Los Angeles World Airports said in a news release, describing the effort as "a move of airlines never before seen at a major U.S. airport."

### Airlines moving into a new terminal

	Moving out of	➤	Moving into	Effective:
Air Canada	T2		T6	May 17 <sup>th</sup>
Allegiant	T3		T5	May 13 <sup>th</sup>
American	T4/T6		T4/T5	Jan 31 <sup>st</sup>
*Avianca	T2		TBIT (T3 check-in) Passengers walk from T3 to TBIT	May 15 <sup>th</sup>
Boutique Air	T3		T6	May 13 <sup>th</sup>
*Copa	TBIT (T6 check-in)		TBIT (T3 check-in) Passengers walk from T3 to TBIT	Apr 7 <sup>th</sup>
Delta	T5/T6		T2/T3	May 13 <sup>th</sup>
Frontier	T3		T5	May 13 <sup>th</sup>
Hainan	T2		TBIT	Apr 14 <sup>th</sup>
Hawaiian	T2		T5	May 17 <sup>th</sup>
*InterJet	T2		TBIT (T3 check-in) Passengers walk from T3 to TBIT	May 15 <sup>th</sup>
JetBlue	T3		T5	May 17 <sup>th</sup>
Qatar	T2		TBIT	May 1 <sup>st</sup>
*Southwest (International)	T2 (T1 check-in)		TBIT (T1 check-in) Passengers bused from T1 to TBIT	May 17 <sup>th</sup>
Spirit	T3		T5	May 15 <sup>th</sup>
Sun Country	T2		T5	May 13 <sup>th</sup>
Thomas Cook	T2		TBIT	May 1 <sup>st</sup>
Virgin America	T3		T6	May 13 <sup>th</sup>
*Virgin Australia	TBIT (T3 check-in)		TBIT (T2 check-in) Passengers bused from T2 to TBIT	May 13 <sup>th</sup>
*Volaris	T2		TBIT (T2 check-in) Passengers bused from T2 to TBIT	May 13 <sup>th</sup>
XL France	T2		T6	June 4 <sup>th</sup>

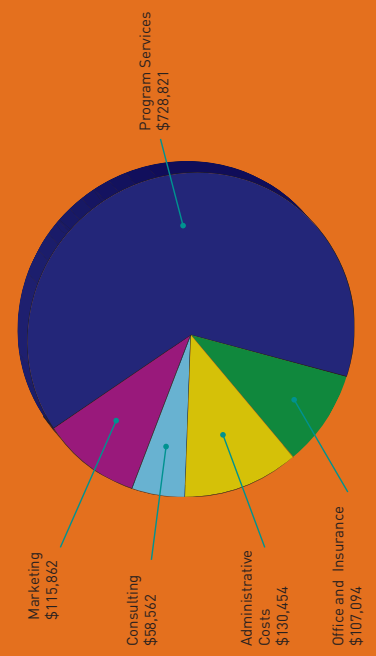
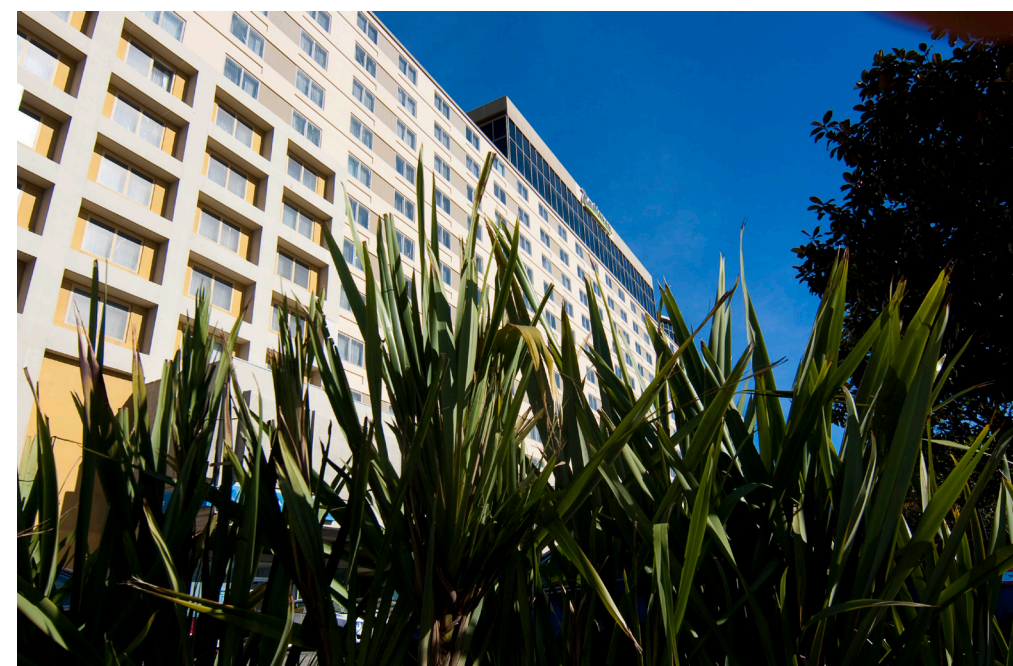
\*Airlines with split operations and or passengers bused between terminals

Terminal = T (Example, T2)  
TBIT = Tom Bradley Int'l Terminal (Terminal B)  
Updated 4-28-2017

Presorted  
First-Class Mail  
U.S. Postage PAID  
Permit #31050  
Los Angeles, CA

# Gateway View

Gateway Los Angeles PBID Quarterly Newsletter Second Quarter 2017



## Services Dominate Gateway's Budget

**PROPERTY OWNERS GET BANG FOR THEIR BUCK WHEN IT COMES TO AREA SERVICES**  
Perhaps there is no more vital function for a business improvement district than providing direct services to its members, and when it comes to delivering those kinds of services, Gateway Los Angeles is putting its money where its mouth is. The Gateway PBID dedicated approximately 64% of its \$1.14 million budget to funding direct services such as the Ambassador, Keep It Clean and recycling programs as well as the Ocean Express shuttle designed to help hotel guests get to the beach and shopping destinations in Manhattan Beach and El Segundo. Gateway also spent more than 10% of its annual budget on marketing efforts designed to promote the area and more than 5% of its annual budget on consulting services associated with such issues as economic development, legal and transit.

## Get Ready to Shred at Gateway Event



### GATEWAY'S ANNUAL SHREDDING EVENT GIVES LOCAL BUSINESSES THE OPPORTUNITY TO SAFELY AND SECURELY DISPOSE OF DOCUMENTS

Gateway's annual shredding event will be held on May 18 at three different times and locations:

- Airport Center II & III  
9841 Airport Blvd.  
8:30 – 10 a.m.
- Airport Spectrum/W. Century Plaza  
10:30 a.m. – Noon
- 5200-5250 W. Century Blvd.  
1 – 2:30 p.m.

**WHAT YOU CAN BRING:**  
File folders and paper (No need to remove staples, paper clips and binder clips) CD-Roms, Data CDs,

DVDs, Microfilm, Microfiche, Credit Cards, Tapes, and Disks.

**WHAT YOU CANNOT BRING:**  
Pendaflex files and 3-Ring Binders

Gateway has partnered with SoCal Shred, a full-service shredding company that provides a full array of shredding services. SoCal Shred's state-of-the-art mobile shredding trucks destroy confidential documents at 6,000 lbs/hr. SoCal Shred has cameras on both the shredder and collection compartment, so you can witness the entire shredding process start to finish. Your documents will be

shredded to an unrecognizable state before SoCal Shred leaves the location.

SoCal Shred exceeds NAID shredding certification standards and assures that all of its shredding drivers undergo extensive background checks and drug testing prior to being hired.

In addition, their shredding trucks and operations are open to unannounced equipment and operations inspections by a qualified third party.

For more Info: (714) SHRED-911

# calendar

**BOARD MEETINGS:**

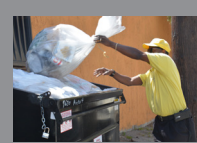
- Thurs July 13** 8 – 9:30am – LAX Marriott Hotel  
5855 West Century Blvd.
- Thurs September 14** 8 – 9:30am – The Westin Los Angeles Airport  
5400 West Century Blvd.
- Thurs November 9** 8 – 9:30am – Sheraton Gateway Hotel  
6101 West Century Blvd.

GATEWAY LOS ANGELES  
9841 Airport Boulevard, Suite #100  
Los Angeles, CA 90045



### GATEWAY AMBASSADORS PATROL THE BID

Check out the ways Gateway's Goodwill Ambassadors program is helping to improve the BID area.



### GATEWAY WORKS HARD TO KEEP IT CLEAN

Gateway LA's street maintenance team is on the job making sure streets are swept, graffiti is painted out and the area remains beautiful for employees, guests and visitors, alike.

## M Club Lounge

### MARRIOTT UNVEILS NEW LOUNGE FOR ITS MOST LOYAL CUSTOMERS

The LAX Marriott Hotel is excited to announce the opening of the new M Club Lounge, which opened its doors on May 7. The M Club Lounge is an elevated, premium concierge lounge for Marriott's most loyal customers that features 24/7 access to a curated space designed to elevate rewards members and everything they do. Members enjoy 24/7 access to a private and exclusive space where they can work on what inspires them with free high speed wi-fi. They can network over complimentary breakfast in the morning, recharge with snacks in the afternoon and unwind in the evening with hors d'oeuvres and a selection of wines, beers and cocktails from a full bar. The M Club Lounge is located on the top floor of the hotel and provides a brilliant view from the Hollywood sign, to downtown, to the ocean and Santa Monica mountains.



# Gateway LA at Work: Your BID Making A Difference



## Gateway Ambassadors Riding to the Rescue



### GATEWAY LOS ANGELES' BIKE-RIDING AMBASSADORS PROVIDE FRIENDLY FACES AND EXTRA EYES AN EARS FOR GUESTS, VISITORS AND EMPLOYEES ALONG THE CENTURY CORRIDOR

Whether it's a visitor struggling to find an address, a hotel guest looking for directions to a restaurant or a hotel security director comparing notes on what's happening around town, Gateway's Goodwill Ambassadors are on the job.

Riding their bikes and wearing distinctive yellow shirts, the BID's Ambassadors serve as the face of the Boulevard.

"Oftentimes, they're the first people visitors encounter when they come to the area," said Gateway's Calvin Beard. "They do a great job helping people with all kinds of requests, and no one knows the area better."

From spotting graffiti or identifying an area that needs cleaning up,

the Ambassadors help observe and report all that is going on in the Gateway area.

Pictured above, Trent Scott, Dontae Humes and Esteban King, know the area like the back of their hands, so when something looks out of place or someone needs a little help, they're right there to lend a hand.

While LAPD's Pacific Division, which includes the Gateway area, routinely ranks among the safest areas of the city, Gateway works closely with LAPD and local hotel and office building security teams to address any crimes in the area. Gateway's Ambassadors, of course, play a key role in that effort..

Serving as the primary eyes and ears on the street Gateway's

Goodwill Ambassadors provide a highly-visible bicycle patrol throughout the district. In addition to improving security, Ambassadors play a valuable role in public safety, and can often be seen assisting people involved in traffic accidents before police arrive.

"Above all, they are there to help people in whatever way they can while providing us with important information about things that might otherwise go unnoticed," said Gateway's Executive Director Laurie Hughes. "They monitor street lights to make sure they are working. They let us know about flooding issues, potholes, trash and even illegal signage. That way, we can identify issues before they become problems and make sure the city deals with them quickly."

## Clean Streets Mean Better Business

### GATEWAY'S MAINTENANCE TEAM MAKES SURE THE CENTURY BOULEVARD AREA REMAINS PLEASANT AND TRASH-FREE

A primary and critical effort to create a clean, safe and welcoming environment throughout the Gateway area is street maintenance.

Gateway employs a staff of maintenance workers, including Chavez Johnson and Vicie Caves (pictured below) to stay on top of trash and street maintenance throughout the BID area.

Services include the removal of trash and litter from sidewalks, emptying of trash cans, sweeping of gutters, removal of weeds and refuse from tree wells and planters and removal of illegal posters and signs on poles.

"Making sure the neighborhood looks nice is important to all of our members," said Executive Director Laurie Hughes. "No one wants to visit or work in an area that has trash all over, so we work very hard to make sure Century Boulevard always looks the best it can."

To aid in that effort Gateway has a Factory Cat automated street sweeper to further beautify Century Boulevard and neighboring streets and contracts with Clean Streets to provide street sweeping services three days a week.

"Four Points LAX has been thrilled with the progress of PBID. So much so that we've partnered with them



for waste bin storage," said Four Points General Manager Peter Kolla. "Gateway now has its own designated bins, located just off the back alley between Four Points and the Renaissance, enhancing their efforts to keep our streets and sidewalks cleaner than ever."

Gateway has also spearheaded numerous clean-up efforts in the area to address trash hot spots and clean up street tree wells, and the BID is constantly developing and administering projects to create a safe, clean and welcoming environment for all.



## Gateway to Go! Best Food on Four Wheels

### WEEKLY FOOD TRUCK EVENT BRINGS SOME OF LA'S HOTTEST FOOD TRUCKS TO CENTURY BOULEVARD

These aren't your father's taco trucks.

Since 2010, Gateway to Go! has been one of the hottest local events around – a weekly lunchtime celebration of the best food on four wheels featuring a rotating line-up of the best gourmet food trucks in Los Angeles.

Attracted by Tweets and Facebook posts, food trucks have developed their own unique following with "foodies" tracking them from location to location throughout Southern California, and Gateway to Go! brings this rotating collection of gourmet food options to the Skyview Parking Lot at 6101 West 98th Street every Tuesday from 11 a.m. to 3 p.m.

Gateway to Go! has become the place to be on a Tuesday. There's always something for everyone whether you like Indian or Italian, Vietnamese or barbecue, and new trucks show up each week.

Stop by and taste what L.A.'s best food trucks have to offer.

### LATEST GLIMPSE OF THE AIRPORT METRO CONNECTOR

Metro has unveiled a new image of the Airport Metro Connector project, a new transit station that will be located at Aviation Boulevard and 96th Street. The station will be where riders on the Crenshaw/LAX Line, Green Line and local buses will transfer to the future LAX people mover that will serve the airport terminals. The rendering shows the design of the station to date with a lot of work still to be done. The project is funded by Measure R and Measure M and will be built separate from the Crenshaw/LAX Line. Los Angeles World Airports — which operates LAX — is aiming to have the people mover complete by 2023.



### LAPD NAMES NEW SENIOR LEAD OFFICER FOR GATEWAY AREA

Gateway Los Angeles is proud of its close relationship with both the Los Angeles Airport Police Department, which patrols the airport, and the Los Angeles Police Department, which patrols the off-airport areas of the City of Los Angeles, including the Gateway area. Recently, LAPD announced that Officer Luis Pinell would take over as the area's Senior Lead Officer, overseeing the LAPD jurisdiction east of Sepulveda Boulevard. Senior Lead Officers are responsible for monitoring crime trends in their areas, working with Community-Police Advisory Boards and BIDs and acting as liaisons with detectives to stay informed of crime trends and special problems within their area. To reach Officer Pinell, please call his cell at (310) 622-3976.



### MORE ABOUT GATEWAY TO GO!

For more information about the trucks scheduled to appear at our weekly Gateway to Go! events, be sure to visit our website at [www.gatewayla.org](http://www.gatewayla.org), follow us on Facebook or look for our monthly ad in the Hometown News.