

# Gateway View

Gateway Los Angeles PBID Quarterly Newsletter First Quarter 2021



## Gateway Supports Our Protectors

GatewayLA was proud to sponsor the LAX Coastal Chamber's Protectors Appreciation Week held this year from February 22 to 26. Every year, the Chamber plans an event to celebrate the men and women who protect our community everyday. For many years the Chamber hosted a lunch event at a hotel inviting 50 local protectors, but in the midst of the pandemic, Gateway participated in the Chamber's Second Annual Protectors Appreciation Week celebrating our local protectors at their stations and reaching more officers without not disrupt day-to-day operations. The week included shows of appreciation such as donating items to their stations like coffee, individually wrapped treats, beverages, raffle items, thank you cards, and more. Gateway is proud of its special relationship with both the Chamber and the protectors who serve our community every day.



**AVIATION/CENTURY STATION ALMOST FINISHED**  
New Green Line Station will link Gateway area to all of Los Angeles when it opens later this year.



**HYATT REGENCY REOPENS RESTAURANT**  
unityLA reopens with al fresco dining on Thursday, Friday and Saturday nights. Come check it out!

## Jazz Isn't Dead!

Gateway's own Sam First is keeping Jazz alive amidst the pandemic with its solo sessions.

Every week, Sam First broadcasts live performances from some of the best Jazz musicians on its website.

Visit [www.samfirstbar.com](http://www.samfirstbar.com) to watch the show and donate to the solo sessions. Your donations are passed through to the musicians and the bar staff.

In addition, the website includes a catalog of previous performances, so that even if you miss one, you can still go back and catch your favorites. You may have to go without in-person concerts during the pandemic, but solo sessions mean you don't have to miss some of the best Jazz around!



## JW Steakhouse Reopens

The LAX Marriott's iconic restaurant JW Steakhouse reopened in February! Walk-ins are welcome; however, reservations are highly encouraged, and can be made through [OpenTable](http://OpenTable.com) at [opentable.com](http://opentable.com) or by calling (310) 293-5471. JW Steakhouse features a streamlined menu that highlights the favorite dishes of Executive Chef Victor Miguel, and seating will be located outside on the Marriott's pool deck. JW Steakhouse is known for its spectacular cuts of meat sourced from Brandt Farm's corn-fed and sustainably raised premium beef without hormones or antibiotics. The menu also includes everything from Colorado Rack of Lamb and Apple-Braised Lamb Shank to Pan-Seared Ahi Tuna and an array of tasty starters and desserts. JW Steakhouse also has a full bar, serving craft cocktails, wine and an extensive collection of bourbon, whiskey and scotch. The restaurant currently has limited hours of operation: 5-10 p.m. on Fridays and Saturdays and 5-9 p.m. on Thursdays and Mondays.

**GATEWAY LOS ANGELES**  
5901 W. Century Boulevard, Suite #100  
Los Angeles, CA 90045

of Inglewood released the Draft Environmental Impact Report for the Inglewood Transit Connector (ITC) Project. The ITC Project is an approximately 1.6 mile, three-station, fully elevated, electrically powered automated people mover system.

Upon completion in 2026/2027, the project will connect passengers between Metro's Crenshaw/LAX Line to Inglewood's major activity centers. Project funds committed to date include a \$95 million grant award from the California State Transportation Agency's Transit and Intercity Rail Capital Program, \$233.7 million in Measure R Highway Funds unanimously approved by the South Bay Cities Council of Governments, and an increased ticket tax from the LA Clippers' Inglewood Basketball and Entertainment Center.

To learn more about the ITC Project and other transportation management solutions, please visit [www.EnvisionInglewood.org](http://www.EnvisionInglewood.org).

Closing Ceremonies of the 2028 Summer Olympics. The city also welcomes the LA Phil's Youth Orchestra of Los Angeles, the Girl Scouts of America, and the NBA's Los Angeles Clippers who will be developing their headquarters, a training facility, and sports arena just south of SoFi Stadium.

To meet growing demands on the city's transportation network, the city has identified transportation strategies that include transportation management plans for large events at SoFi Stadium and The Forum, and other strategies to address neighborhood intrusion. The city has since expanded its existing permit parking program to implement citywide 24/7 parking restrictions, constructed a transit plaza at the city's Civic Center Lot at Hollywood Park to expand transit options from surrounding municipalities, and is actively working on building a network of remote parking sites, and a shuttle service.

On December 23, 2020 the City



# Inglewood Transit Connector Will Link Sports, Entertainment Hub

**NEW RAIL LINK IS PART OF CITY'S TRANSFORMATION THAT WILL DRIVE MORE TOURISM**

An exciting transformation is underway as the City of Inglewood enhances its distinction as a world-class sports and entertainment hub within the greater Los Angeles region. Inglewood and its emergent population, housing, employment and entertainment centers is becoming one of the fastest growing municipalities in the County. As the LA Metro Crenshaw/LAX Line sets to open in late 2021, with a Downtown Inglewood stop, Inglewood is taking that opportunity to further enhance transit access to the city.

Inglewood is proud to be home to The Forum, which hosts some of the largest acts in the nation, and to Hollywood Park and its 298 acres of redevelopment to include new residential, commercial, and recreational uses – the centerpiece of which is SoFi Stadium which will host large-scale sports events and year-round entertainment. SoFi Stadium has already secured Super Bowl LVI in 2022, the College Football National Championship Game in 2023, and the Opening/

Presorted  
First-Class Mail  
U.S. Postage PAID  
Permit #31050  
Los Angeles, CA





# AMCS Spring Celebration Helps Clinic Address COVID-19 Stress

**FUNDRAISER WILL HELP AMCS PROVIDE LOW-COST MENTAL HEALTH SERVICES, TRAIN THERAPISTS**

Airport Marina Counseling Service's (AMCS) 17th annual "Spring into Well-Being" Celebration will be held on Thursday, May 6, 2021, at 5 p.m. at the H Hotel Los Angeles in the Gateway area. It will be livestreamed via Zoom as well. The event will celebrate the success of the clinic's 2021 Champion of Mental Health Cedars-Sinai Marina del Rey Hospital. Cedars-Sinai has been instrumental in helping AMCS become an indispensable part of the county's mental health care safety net.

"The hospital helped AMCS with grants to create a three-year strategic plan and funded a partnership with Mar Vista Family Center and Open Paths Counseling Center called the 'Building Healthy Families Initiative,'" said AMCS CEO Eden Garcia-Balis. "They have also given us a grant for an electronic health records system, which will be huge for us as we work to digitize our records. We are excited to honor Cedars for their incredible contributions to the clinic."

The live event is expected to attract 100 key local community and business leaders in a socially distanced and COVID-safe environment, while hundreds more watch via Zoom. The goal, Garcia-Balis said, is more than \$300,000 to help continue providing much-needed affordable, community-based mental health services



and to support the training of the clinic's more than 60 mental health therapists each year.

Over the past year, AMCS has played an increasing role in providing counseling to help people from all walks of life overcome the stress associated with the pandemic and the isolation that has come along with it.

Retired NBC4 Weathercaster Fritz Coleman will serve as the emcee, and the event will include a variety of auction items, both live and silent, as well as fun games and a celebration of AMCS's success in providing critically needed mental health services even in the midst of a pandemic.

For more information about the event or to purchase tickets, please visit [www.AMCShelps.com](http://www.AMCShelps.com).

**NEW STATION WILL ENABLE RIDERS FROM ALL OVER LOS ANGELES REACH THE GATEWAY AREA AND ULTIMATELY THE AIRPORT**

# Aviation/Century Station in Heart of Gateway Area Nears Completion

The 8.5-mile Metro Crenshaw/LAX Transit Project broke ground in 2014 and is nearly complete. Stated for delivery later this year, the \$2.1 billion project will extend light rail transit service from the Expo Line's Exposition/Crenshaw station to the Green Line's Aviation/LAX station. The line will provide transportation options along Crenshaw, Inglewood, Westchester and LAX, and will feature eight new stations, including the Aviation/Century station, which will enable riders from throughout the county, from Crenshaw, Santa Monica, Downtown LA, the San Fernando Valley, Pasadena, Long Beach and Azusa to arrive in the Gateway area. Ultimately, the Airport Metro Connector and LAWA's people mover will provide a reliable connection to LAX.

"A very complex undertaking, the project features nearly every type of light rail alignment," said Metro Communications Manager Jose Ubaldo, who added that the dynamic nature of the project, the highly complex construction required and the critical testing components necessary for life safety have meant a longer than expected construction period.

Upcoming construction activities in and around the Aviation/LAX station will include the following:

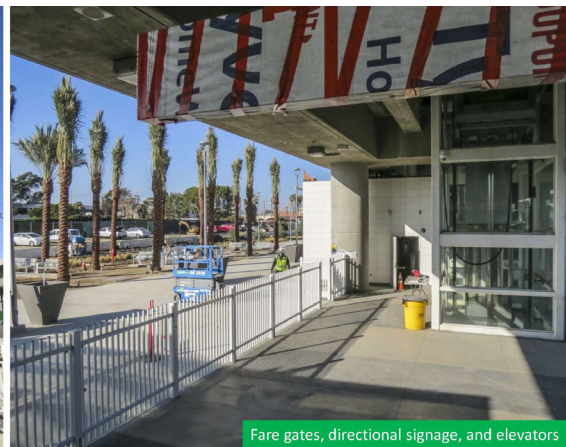
- Installation of landscaping lighting
- Installation of station art fence
- Repaving of the Century Boulevard and Aviation Boulevard
- Completion of traffic light installation at Century Boulevard and Aviation Boulevard
- Imperial Highway between Aviation Boulevard and Hornet Way Street Restoration



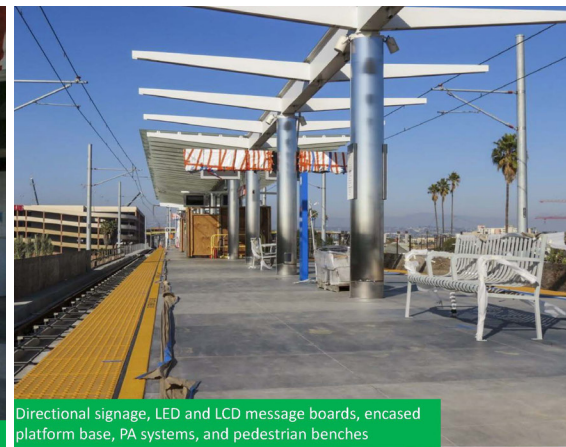
Station platform and canopies, Ticket Vending Machines, landscaping, pedestrian benches, steel bollards, and fare gate equipment



Pedestrian benches and palm trees



Fare gates, directional signage, and elevators



Directional signage, LED and LCD message boards, encased platform base, PA systems, and pedestrian benches



Blue emergency callbox on station platform installation



Remaining plaza to be paved

## HYATT REGENCY REOPENS UNITY LA

### Restaurant Moves to Al Fresco Dining

Savor flavors from some of LA's most ethnically diverse neighborhoods at the Hyatt Regency Los Angeles International Airport's unityLA Restaurant, which has recently reopened with a "Patio Edition." Designed for sharing, unityLA's dishes are inspired by the city's incredible Latin and Asian cuisine and can now be enjoyed on the outdoor patio. unityLA Patio Edition features al fresco dining, full dinner service and cocktail and wine selections; and will be open Thursday, Friday at Saturday nights from 5 to 10 p.m. The Hyatt has also reopened unityLA Bar, where you can sip a California wine, nurse a refreshing craft beer, or enjoy a handcrafted cocktail. In addition, unityLA Market is open for all-day dining and features hot and cold food items as well as a mix of alcoholic and non-alcoholic beverages.



## LEADERSHIP 3.0 BEGINS IN MAY

### Gateway Supports Chamber's Leadership Academy

During this pandemic, getting the most from our teams at work has been a challenge. Keeping employees motivate and on-task is no easy feat as we navigate through Zoom fatigue and email overload. Leadership has never been more important as we strive to recover and rebuild our businesses.

The LAX Coastal Chamber of Commerce will launch on a four-session virtual leadership training as we talk about current events, analyze our leadership styles, reframe our goals and take a deeper look into coaching. Dr. Kevin Walsh of Global Community Enrichment will lead participants on an in-depth journey as they explore what being a leader in 2021 means.

The class, Leadership 3.0, proudly sponsored by GatewayLA, will launch in May with no more than 25 participants. For more information go to [www.laxcoastal.com](http://www.laxcoastal.com) or email [christina@laxcoastal.com](mailto:christina@laxcoastal.com)