

The Future of Water in L.A. Flows Through Gateway Area

LADWP MAKES MAJOR INFRASTRUCTURE INVESTMENT IN GATEWAY AREA

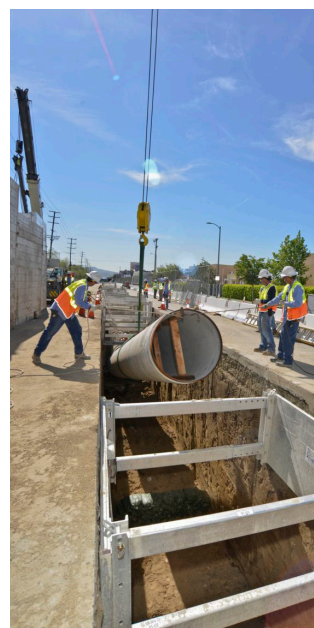
The Century Trunk Line Unit 1 project is an important Water System infrastructure investment that will provide additional capacity, system flexibility and greater reliability to customers at LAX and across the City of Los Angeles.

LADWP will replace an existing water pipeline originally installed in 1937 on Century Boulevard that is operating past its useful service life.

Approximately 10,880 feet of 24- and 48-inch diameter new earthquake resistant ductile iron pipe (ERDIP) will be installed, increasing resiliency during seismic events. ERDIP joints are designed to resist joint separation and allow for expansion and deflection.

LADWP and Los Angeles World Airports (LAWA) are closely coordinating the phases of construction with LAWA's Landside Access Modernization Program (LAMP) projects to take advantage of opportunities to minimize impacts to traffic, businesses and residents.

Phase 1 is located primarily on 98th Street and will be installed by an LADWP contractor. Access to businesses will be maintained at



Similar Trunk Line being installed on Foothill Boulevard. Photo by Art Mochizuki.

all times. Advance notice of alternative traffic patterns and parking restrictions to accommodate construction will be provided to affected businesses.

Phases 2 and 3 are located primarily within future LAMP roadways. These phases will be constructed by LAWA's contractors, in coordination with LAMP projects.

For schedule updates, visit ladwp.com/CenturyTrunkLine

CENTURY TRUNK LINE UNIT 1 PROJECT SCHEDULE

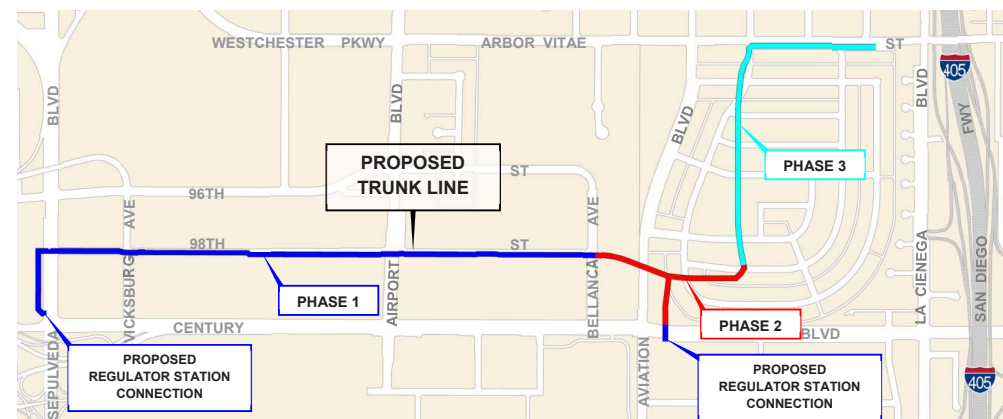
Phase 1:
Summer 2019 – Summer 2020

Phase 2:
Summer 2019 – Summer 2020

Phase 3:
Summer 2019 – Fall 2022

(18 month construction duration)

Work Hours:
Monday – Friday
8am to no later than 7pm
Saturday work may be required between 8am and 6pm.



Presorted
First-Class Mail
U.S. Postage PAID
Permit #31050
Los Angeles, CA

calendar

BOARD MEETINGS:

- Tue July 9 8 – 9:30am – Hilton Los Angeles Airport
5771 W Century Boulevard
- Tue September 10 8 – 9:30am – Metro – Southwest Yard
5600 Airbor Vitae Street
- Tue November 12 8 – 9:30am – Renaissance LAX Hotel
ANNUAL MEETING
9620 Airport Boulevard

GATEWAY LOS ANGELES
5901 W. Century Boulevard, Suite #100
Los Angeles, CA 90045

Project Manager:
Annette Flores | 213-367-0827
annette.flores@ladwp.com

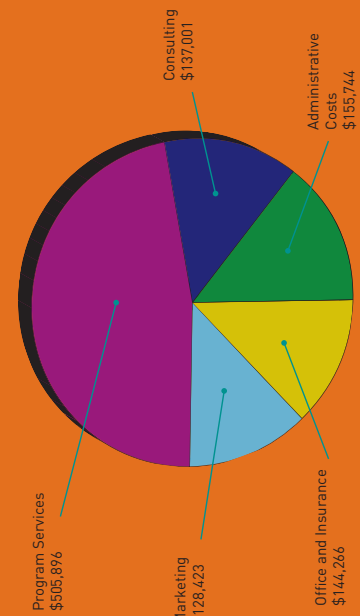
Associate Project Manager:
Mary Olmos | 213-367-4475
mary.olmos@ladwp.com

Community Affairs:
Deborah Hong | 213-367-5204
deborah.hong@ladwp.com

Programs Dominate Gateway's Budget

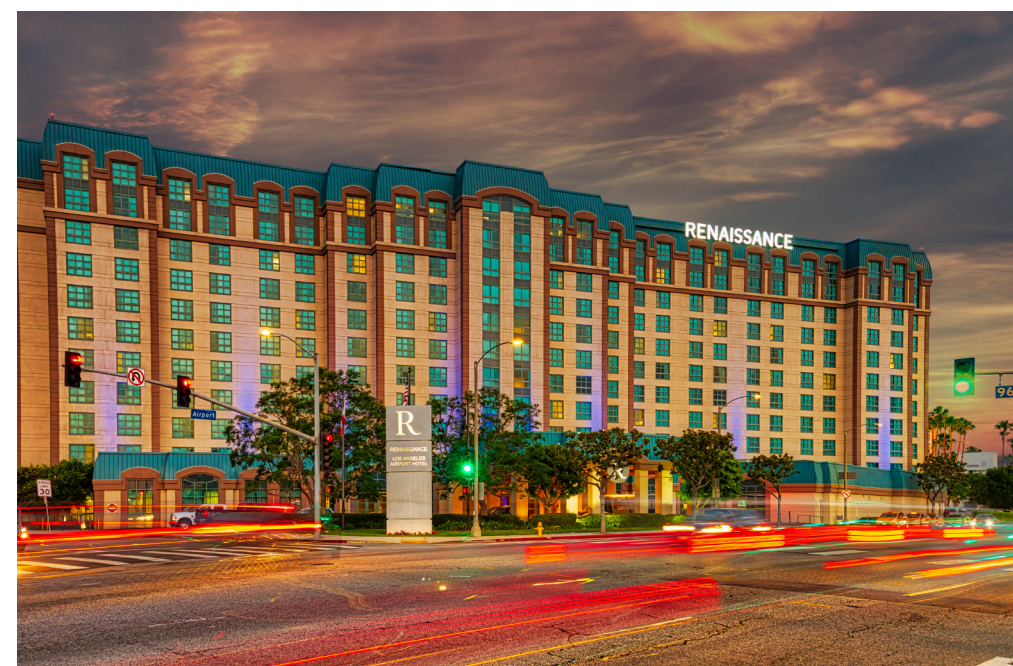
PROPERTY OWNERS GET BANG FOR THEIR BUCK WHEN IT COMES TO AREA SERVICES

Perhaps there is no more vital function for a business improvement district than providing direct services to its members, and when it comes to delivering those kinds of services, Gateway Los Angeles is putting its money where its mouth is. The Gateway PBID dedicated approximately 47% of its \$1.071-million budget to fund direct services to its members, including security, ambassador services, graffiti removal, tree-trimming and maintenance. In addition, 12% of Gateway's annual budget focused on marketing the area to the local community and to visitors from around the world. The remaining portion of the 2018 budget went to administrative costs (15%), consulting (13%) and office and insurance expenses (13%).



Gateway View

Gateway Los Angeles PBID Quarterly Newsletter Second Quarter 2019



LADWP PLANS NEW WATER INFRASTRUCTURE
A major water infrastructure improvement project along 98th Street in the Gateway area will begin this summer.



METRO OPENS SOUTHWEST YARD
New Arbor Vitae facility will service Metro light rail cars and house general administration offices for Metro.



MAKING PROGRESS!

LA'S NEW NFL STADIUM IS TWO-THIRDS COMPLETE

The swooping shell that will support the roof over Inglewood's NFL stadium is complete. The future home of the Rams and Chargers is now more than two-thirds finished. The newly complete shell atop the venue will support the other two components of the stadium's roof: a cable net system and the clear plastic cover, which will be made of a transparent material called ETFE.

Connections for Children Honors Bob Ruth at 2019 Betsy Awards

5901 CENTURY OWNER HONORED FOR HIS WORK WITH EARLY CHILDHOOD EDUCATION

Bob Ruth was honored by one of Gateway Los Angeles' newest members, Connections for Children, at their annual Betsy Awards & Reception on April 24, 2019 at the Marina del Rey Marriott.

Connections for Children is a non-profit child care resource and referral agency whose mission is to build a stronger future for children, families and communities through quality child care resources, education and guidance.

For more than 40 years, Connections has played a critical role in helping families across the Westside and South Bay find child care solutions that meet their unique needs. The organization also works with early childhood educators to support their professional development and ensure program quality.

Connections for Children's Betsy Award is named after one of the agency's founders, Betsy Hiteshew, who is a life-long champion for young children and families. The 2019 Betsy Awards were given to Connections' most recent Executive Director Patti Oblath and to Bob Ruth.

Throughout his career, Bob has been involved with professional and community organizations that work to improve the quality of life and living environment for the Los Angeles community. Bob



is a recipient of the Humanitarian of the Year Award by the National Conference of Community and Justice. He has served in leadership roles for the L.A. Zoo, the Urban Land Institute, the Urban Land Foundation, L.A. Family Housing, the Building Owners Managers Association, and the

2017, adding creative suite layouts, an executive clubhouse, dog park, bicycle sharing program and more. As one of the premier office buildings in the LAX submarket, 5901 Century offers convenient walking access to numerous amenities including full service hotels, restaurants, as well as unmatched access to transportation.

When Connections for Children realized that it would be priced out of the Santa Monica office market, it found a new home at 5901 W. Century Boulevard. Bob Ruth and his team worked with Connections for almost a year to prepare the space so that Connections could move in without interrupting the flow of critical child care assistance to its families and children.

For information on Connections for Children's resources, call (310) 452-3325 or visit www.connectionsforchildren.org



Young Presidents Organization. Bob is also President of The Ruth Group, a Los Angeles-based company focused on value-added opportunities in office, industrial, multi-unit residential and retail projects. His firm represents both users and investors of commercial real estate and owns 5901 Century Boulevard. 5901 Century is a 15-story office property that underwent a full renovation in

Think Twice About Parking Restrictions

Think twice before you park in a restricted area. Local property owners have begun stricter enforcement of parking restrictions throughout the area to combat people who disregard reserved parking, handicapped parking and other restrictions.



BEAUTIFICATION PROJECT

Gateway Trims Local Trees

As part of Gateway Los Angeles' regular efforts to maintain and beautify the area, the PBID assessed the state of trees throughout the Gateway area. As a result, 75 Mexican Fan Palms and two Ficus trees were trimmed between Aviation and La Cienega Boulevards.



Midfield Satellite Concourse (2020) will add 12 new aircraft gates. The airport's People Mover system broke ground last month and will open in 2023, allowing travelers to ride to all terminals for free and out of airport to Metro Station, reducing congestion. Wooden added that tourism continues to be one of the city's most powerful economic engines with record-breaking visitor spending of \$23.9 billion, resulting in record economic impact of \$36.6 billion. "Tourism continues to boost ongoing build of our communities in Los Angeles, positively influencing the prosperity of all Angelenos," he said. And there's more to come. The Academy Museum (opening later this year) will be dedicated to the art and science of movie-making and will boast state-of-the-art galleries, exhibition spaces, movie theaters, and special event spaces. Wooden also pointed out that we are just one year away from the opening of Los Angeles Stadium, the new, 70,000 seat, state-of-the-art stadium that will be the epicenter of the sports world and will host the 2022 Super Bowl, 2023 College Football Championship, 2026 World Cup bid, 2028 Olympic and Summer Olympic Games.

LA Tourism CEO Talks Tourism Data

ERNEST WOODEN, JR. SAYS TOURISM CONTINUES TO BE THE CITY'S BIGGEST ECONOMIC ENGINE, SETTING NEW RECORDS

At LAX Coastal Chamber of Commerce's Power Hour on May 7, Ernest Wooden Jr., President and CEO of the Los Angeles Tourism & Convention Board (LA Tourism), the city's official tourism marketing organization, spoke about marketing the Los Angeles region as one of the world's most-visited and known travel destinations.



During the event, hosted by the Hilton, Wooden said Los Angeles reached a historic milestone in 2018, welcoming 50 million visitors for the first time ever and accomplishing the destination's ambitious tourism goal two years early. The new record is 1.5 million visitors higher than 2017's total – a 3.1 percent increase – marking the eighth-consecutive year of tourism growth for Los Angeles. In surpassing 50 million total visitors, Los Angeles set new tourism records for domestic and international visitation, hosting an estimated 42.5 million domestic visitors (3 percent increase) and 7.5 million international visitors (3.6 percent increase). Chinese visitors – many of whom stay in LAX area – continue to drive international growth. Los Angeles is their No. 1 U.S. destination with 1.2 million visitors who spend \$1.6 billion – by far the top international spenders. While L.A. Tourism has four full-time offices in China (Beijing, Shanghai, Guangzhou and Chengdu), it is also investing in emerging international markets in Scandinavia, India and South Korea.

Wooden added that the hotels in LAX corridor continue to outperform entire L.A. County market with over 85% occupancy year-to-date. L.A. Tourism positions the Gateway offerings as a fun layover or a home base before other travels with L.A.'s highest concentration of affordable hotels, including every major hotel brand.

Success of the area also hinges on the on-going \$14 billion transformation to reimagine the LAX airport experience across all terminals, Wooden said. A new



Southwest Yard Facility Opens to Serve Metro Light Rail Cars

GATEWAY WELCOMES NEW SITE ON ARBOR VITAE THAT WILL SUPPORT METRO'S RAIL SYSTEM

Los Angeles County Supervisor and Metro Board Member Mark Ridley-Thomas and Chief Executive Officer Phillip A. Washington helped officials from all over Los Angeles cut the ribbon for the newly completed Division 16 Southwestern Yard maintenance facility.

This facility will serve the new Crenshaw/LAX Metro Line and the Metro Green Line. Division 16 was designed, constructed and equipped to perform service and inspection, heavy repairs, body repairs, painting, storage, cleaning, and washing of light rail vehicles. In addition, it will house general administration, support services, miscellaneous maintenance shops, and equipment housing and storage.



The 115,650-square-foot facility will have capacity to store up to 70 light rail vehicles. Construction began in May 2016 and was completed in April. The yard will be the maintenance facility for the Crenshaw/LAX Line. The facility is located near Los Angeles International Airport at 5600 Arbor Vitae Street.

