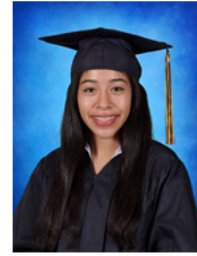


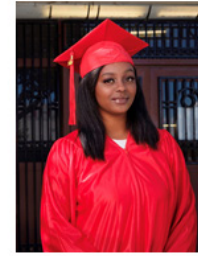
Ashanti Salazar
St. Bernard's High School



Monique Balan
Animo Leadership Charter H.S.



Jonathan Hale
St. Bernard's High School



Bethlehem Mamo
Westchester Enriched Sciences



Christopher McCreary
DaVinci High School



Estrella Sacalot
Animo Leadership Charter H.S.



Rickey McGregor
St. Bernard's High School



Hector Cardona
Lennox Academy H.S.



Jennifer Hernandez
Animo Leadership Charter H.S.



Ricardo Santana
Lennox Academy H.S.



Martha Salazar
Lennox Academy H.S.

Presorted
First-Class Mail
U.S. Postage PAID
Permit #31050
Los Angeles, CA

Gateway Supports Kiwanis Club, Helps Provide Scholarships

GATEWAY LA AND ITS MEMBERS COME TOGETHER TO HELP SOME OF THE AREA'S TOP STUDENTS

For more than 30 years, the LAX Kiwanis Club and Foundation has awarded more than \$1 million in college scholarship grants to deserving graduating seniors in the LAX area.

Gateway LA joined many Gateway members in raising more than \$30,000 for this year's scholarship effort.

"So many local businesses come together to help raise funds for these incredible students," said Gateway Executive Director Laurie Hughes, who chaired the club's scholarship program. "The money these students receive often makes

the difference between going to college and not going, and I am so proud of all of our members for stepping up to the plate and helping Kiwanis make college a reality for these students."

Among the Gateway members who helped sponsor the event are: Hilton Los Angeles Airport, Hollywood Park Casino, Hyatt Regency, Los Angeles World Airports and Wally Park / Wally Park Express.



Scholarship applicants are evaluated for both merit and need and represent some of the best high school students in the area.

"I am motivated by a dream that one day, after walking across the stage to accept my diploma, I will walk over to my parents and hand it to them and tell them it was only because of them and the sacrifices they made that got me here," said a previous scholarship winner, who is now attending UCLA.

Leadership Academy 2.0

After 13 years of a successful Leadership Academy graduating over 200 fellows, the LAX Coastal Chamber of Commerce, in partnership with Gateway Los Angeles, is about to embark on a new program: Leadership 2.0.

This five-week program, led by facilitator Dr. Kevin Walsh, will take a deep dive into leadership, communication, coaching, diversity, equity and inclusion and more through a series of 3 to 4 hour virtual sessions. This training is designed for today's executive, manager, owner, business leader and community advocate.

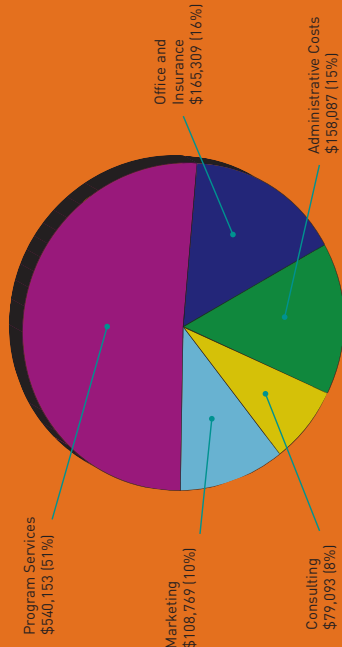
Classes will be held on Mondays beginning on November 2 and will continue until November 30. For more information on Leadership Academy 2.0 or any of the programs offered by the LAX Coastal Chamber of Commerce, please go to www.laxcoastal.com or call Christina Davis at 310-529-7331.

GATEWAY LOS ANGELES
5901 W. Century Boulevard, Suite #100
Los Angeles, CA 90045

Programs Dominate Gateway's Budget

PROPERTY OWNERS GET BANG FOR THEIR BUCK WHEN IT COMES TO AREA SERVICES

Perhaps there is no more vital function for a business improvement district than providing direct services to its members, and when it comes to delivering those kinds of services, Gateway Los Angeles is putting its money where its mouth is. The Gateway PBID more than half (51%) of its \$1.051-million budget to fund direct services to its members, including security, ambassador services, graffiti removal, tree-trimming and maintenance. In addition, 10% of Gateway's annual budget focused on marketing the area to the local community and to visitors from around the world. The remaining portion of the 2019 budget went to administrative costs (15%), consulting (8%) and office and insurance expenses (16%).



Gateway View

Gateway Los Angeles PBID Quarterly Newsletter Third Quarter 2020



HYATT MOVES AHEAD ON DUAL-BRAND HOTEL
Hyatt Place LAX and Hyatt House LAX will bring the brand's intuitive design, casual atmosphere and spacious rooms to the Gateway area.



WATCH LAX BEING BUILT ON YOUR LAPTOP
LAX's live webcams let everyone watch construction in real time. Be sure to check them out!



Courtyard Renovations

Courtyard by Marriott Los Angeles LAX/Century Blvd., has just completed a dramatic and insightful multimillion-dollar renovation. The renovation of the public areas and guests rooms of the 190-room property includes two new Social Distancing Salons. With guests congregating less in large public areas as the result of the pandemic, hotel management embraced this demand with the addition of Social Distancing Salons available in "Lounge" and "Conference" configurations that can be reserved in two-hour time blocks for \$89 per salon. These new 235-square-foot salons are fully enclosed and provide versatile layouts for both business and leisure travelers. Located at the entrance to the Lobby, the salons are framed with glass doors which create a bright, intimate ambiance unlike traditional meeting rooms.



New Dual-Branded Hotel Bring's Hyatt's Premium Aesthetic to LAX

Hyatt Place LAX and House Hotel LAX will embrace LA's historical mid-century architecture and design with a contemporary twist. The 272-room Hyatt Place LAX will bring the brand's intuitive design, casual atmosphere, spacious guest rooms with distinct sleeping and living areas, and practical amenities, such as free Wi-Fi and 24-hour food offerings, to guests looking for a relaxing and uncomplicated place to pause before beginning the next leg of their journey.

The 129-room Hyatt House LAX will offer apartment-style suites with fully equipped kitchens, providing guests with the spaces and places that make them feel more at home. Together, the two hotels will offer an array of shared services and amenities that meet the needs of transient and extended-stay guests, which will be highlighted by a rooftop pool, restaurant and bar with unprecedented views of LAX runways, downtown Los Angeles, the Hollywood Sign, Beverly Hills, Santa Monica, and Manhattan Beach.

Located steps away from LAX at 5959 West Century Blvd. and less than two miles away from the new City of Champions Stadium, Hyatt Place LAX and Hyatt House LAX will serve the annual 85 million business and leisure travelers that pass through the second busiest airport in the United States. LAX is undergoing a \$14 billion renovation, which will include a new automated people mover to the airport, which will be steps from Hyatt Place LAX and Hyatt House LAX.

"Hyatt Place LAX and Hyatt House LAX are great examples of our continued focus on growing premium hotels that will attract business and leisure travelers alike," said Julianne Smith, senior vice president of development and owner relations, Hyatt Place and

Hyatt House. "We're thrilled to team up with Steve and the entire CaRE Development team on this dual-branded hotel – together, our collaboration speaks volumes about the strength of LA's economy and the appeal and convenience of two hotels that will meet the needs of guests visiting LA or passing through LAX."

"LAX and LA continue to exhibit strong hospitality demand fundamentals. Between the \$14 billion LAX renovation, new public transportation, Silicon Beach, large research universities, the 2028 Summer Olympic Games, a new NFL stadium that will be home to the LA Rams and LA Chargers, and some of the best weather in the world, we can't wait to open our doors for all to enjoy," continued Shpilsky.

For more information, please visit hyatt.com/whysettle.



Gateway Creates New Emergency Contact List for Members

In an effort to help its members access a variety of important contacts throughout the city, Gateway Los Angeles has created an emergency contact list that is now available on cards that can be shared with concierges, security staff and property managers.

"It is sometimes difficult to know exactly who to contact if you need to speak with someone about a car that is parked illegally, for example," said Gateway Executive Director Laurie Hughes. "We hope this card will enable our members to cut through the red tape and get directly to the person who can help them."

Hughes added that the list also includes a website where members can file a police report with the Los Angeles Police Department and connect with the LAPD's Senior Lead Officer – officers who are responsible for monitoring crime trends in the Gateway area, working with the Community-Police Advisory Board and acting as liaisons with detectives to stay informed of crime trends and special problems within the area.

To get your cards, please call (310) 642-7849.



- LAPD**
Pacific Division
 12312 Culver Blvd.
 Los Angeles, CA 90066
Station Desk (310) 482-6334
Non-Emergency LAPD (877) ASK-LAPD • (877) 275-5273
 File a Police Report Online
LAPDONLINE.ORG
- LAWA Police Dispatch**
 (310) 646-4268
- LADOT Parking Enforcement**
 (213) 485-4184
- LAPD Senior Lead Officer**
 Luis Pinell
 (310) 622-3976
- LAPD Sub-Station LAX**
 (310) 646-2255
- Federal Bureau of Investigation (FBI)**
(Counterfeit Currency)
 (310) 337-9138
- Drug Enforcement Agency (DEA)**
 (310) 877-0430
- Transportation Security Administration (TSA)**
 (310) 242-2911

COVID-19 TESTING



9600 South Sepulveda Blvd.
 Los Angeles, CA 90045

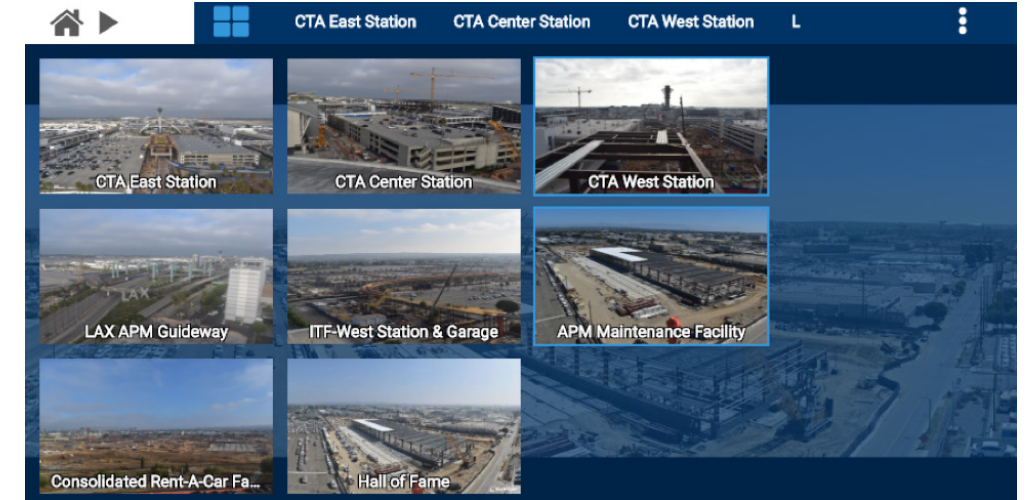
Nasal Swab PCR \$100
 Antibody Test \$50
 PCR + Antibody \$150
 Test Results <48hrs
 Insurance not accepted

Monday - Friday
 8:00AM – 5:00PM
 Walk-ins only

BOTH tests FDA approved

covidtesting@equaltox.com

(714) 760-4804



Watch LAX Being Built Via Modernization Project Webcams

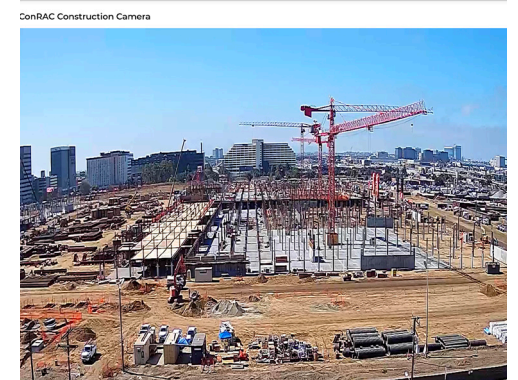
LAX CONSTRUCTION CAMERAS SHOWCASE PROGRESS ON MODERNIZATION PROJECTS

Construction of LAX's \$5.5 billion Landside Access Modernization Program (LAMP) has continued on during the COVID-19 pandemic and there has been much progress on building the future of LAX.

Did you know that you can follow the progress from the comfort of your own home (or office)?

LAX has installed seven construction cameras in and around the airport area to capture the amazing progress underway. Check out the aerial views of construction on the Automated People Mover (APM) train system, the Intermodal Transportation Facility-West, APM Maintenance and Storage Facility and the Consolidated Rent-A-Car facility.

Inside the Central Terminal Area (CTA), LAWA cameras are stationed on top of the old control tower, the iconic Theme Building and the roof of Tom Bradley International Terminal, while outside of the CTA, the airport's partners at the H Hotel, Renaissance LAX and Holiday Inn LAX have graciously allowed LAWA to set



up cameras on their rooftops to capture the amazing views. Visit the LAMP website to check out the cameras: www.lawa.org/connectinglax/web-cameras.

Make sure to also follow LAX on Twitter and Instagram (@FlyLAXAirport) and Facebook (/LAXInternationalAirport) for construction updates.

COVID RELIEF FUND

County Opens New Round of Grant Opportunities

Los Angeles County and the LA Regional Covid Relief Fund will be opening up Round 4 of 6 to provide relief to small businesses, non-profits, and entrepreneurs on Monday, August 31 and this round will remain open until Friday, September 4. These small business grants range from \$5,000 to \$15,000. New to this 4th Round, mid-size businesses (with gross receipts greater than \$1 million, but less than \$5 million) are eligible for grants up to \$25,000. To learn more about this grant and to apply, please visit www.lacovidfund.org/grants. Please be sure to also read the frequently asked questions about grant parameters.